

3 Required Packing Items

4 ColonyCam Packing

COLONYCAM PACKING

The disassembly and packing of ColonyCam requires no special skills — you just need the instructions in this guide.

If you have any questions before or during packing process, we're on hand to help:

Phone: +44 (0) 1984 640226

Email: technicalsupport@singerinstruments.com



BEFORE YOU START!

- **Remove any peripheral items from the side sockets.** There is a risk of damage to the internal working if any peripheral items are left plugged in during transit.

REQUIRED PACKING ITEMS

PACKING ITEMS

If you are missing any of these items, please contact us as they are essential to successfully pack your ColonyCam.

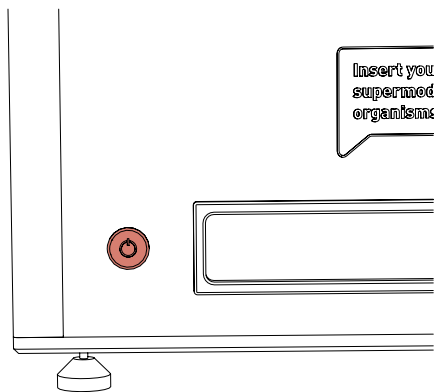
1. ColonyCam packing foams and box.
2. Reuseable transit straps
3. Associated boxes for keyboard , mouse and screen.

ADDITIONAL ITEMS

1. (2x) Large cable ties

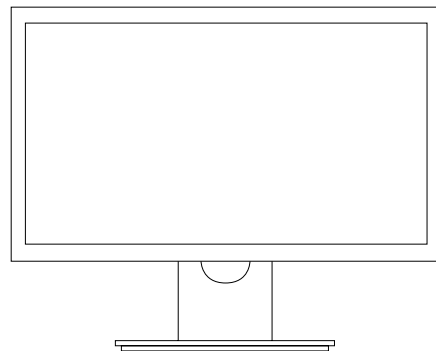
COLONYCAM PACKING

1



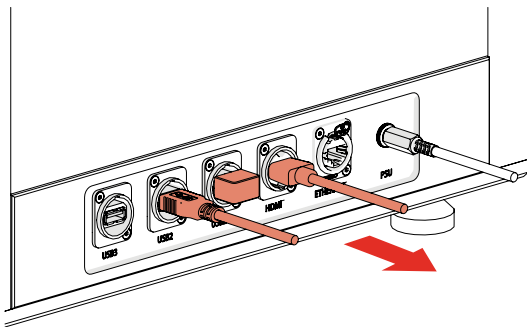
- Press the power button to turn off ColonyCam if still powered on.

2



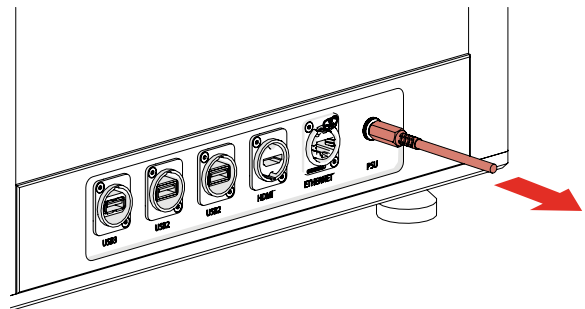
- Ensure that the screen is powered off. Rebox the screen in its packaging.

3



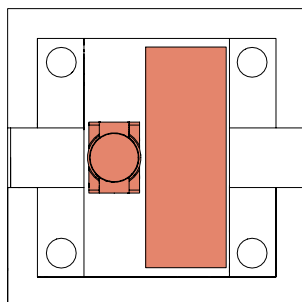
- Remove all peripheral devices from the ColonyCam and place them back in their packaging.

4



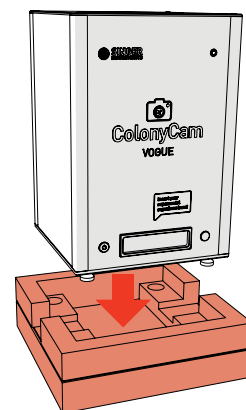
- Remove the power cable.

5



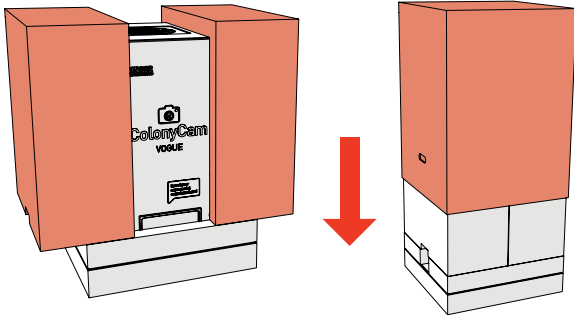
- Pack the keyboard/ mouse box, HDMI cable and Petri Adapter into the pocket of the lower foam.

6



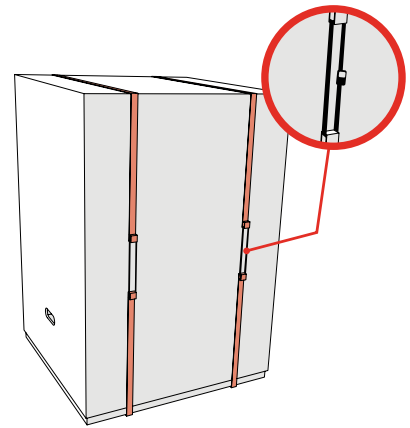
- Carefully place ColonyCam back in the lower foam and tray.

7



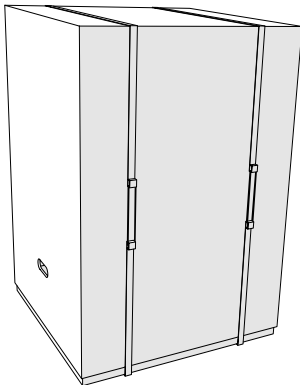
- Replace the clamshell packaging and box lid back onto of ColonyCam.

8



- Slide the reuseable straps around the box length ways.
- Secure each strap with a cable tie.

9



- You're all packed and ready to ship!



SINGER INSTRUMENTS

A RESPONSIBILITY TO SCIENCE!

Roadwater
Watchet
Somerset
TA23 0RE
UK

+44 (0)1984 640226 (tel)
+44 (0)1984 641166 (fax)

contact@singerinstruments.com
singerinstruments.com



**SCAN TO VISIT WEBSITE FOR MORE
HELPFUL TIPS AND TUTORIALS!**



DISCLAIMER

At Singer Instruments, we are constantly seeking to improve our products and adapt them to the requirements of modern research techniques and testing methods. This involves modification to the mechanical structure and optical design of our instruments. Therefore, all descriptions and illustrations in this user guide, including all specifications are subject to change without notice.