



ROTOR – V2 PINS - FITTING

INTRODUCTION

Due to changes in the size of the V2 plates we have modified the size of the location pins on the turntable and station black to compensate. You will receive a pack with the necessary tools and parts to replace them.

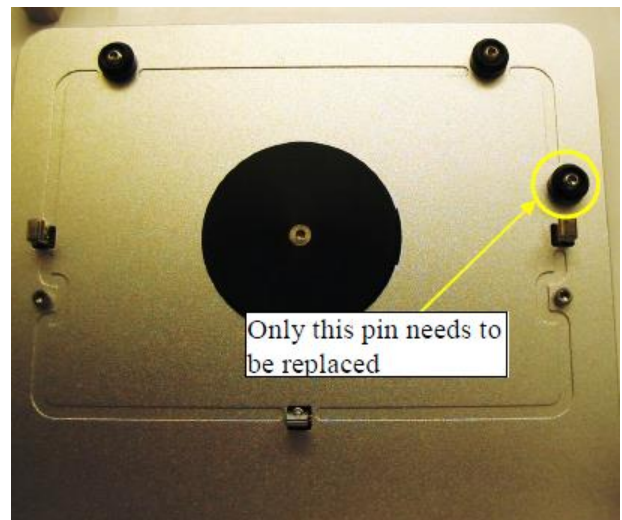
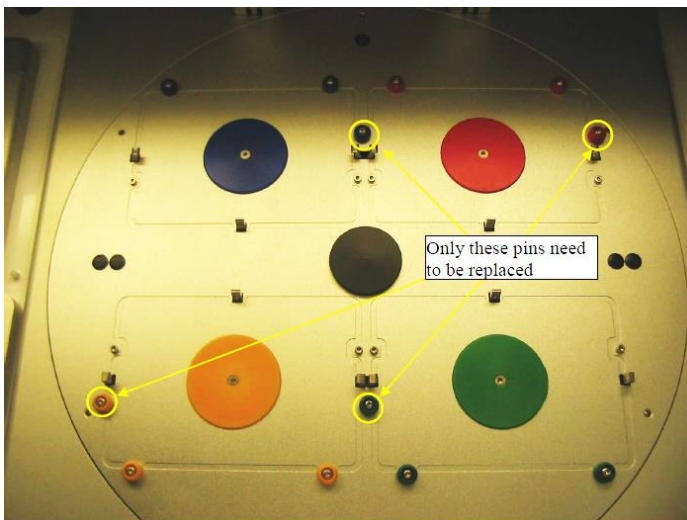
TOOLS & PARTS

- 2mm Allen Key (hex key)
- 5 x larger coloured buttons.
- Spare screws



PROCEDURE

- Before you start to replace the pins turn the ROTOR off and lift the clear safety screen, which will enable you access to all the pins which need replacing.
- Use the photos below to locate which pins need to be replaced

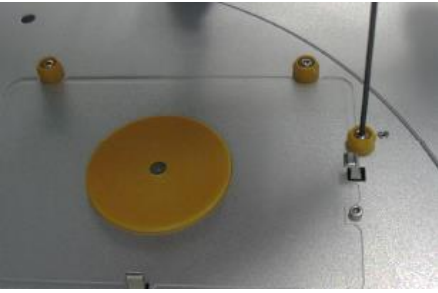

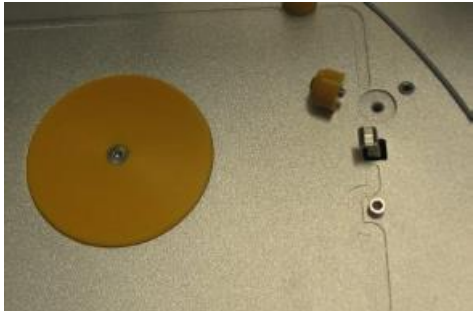
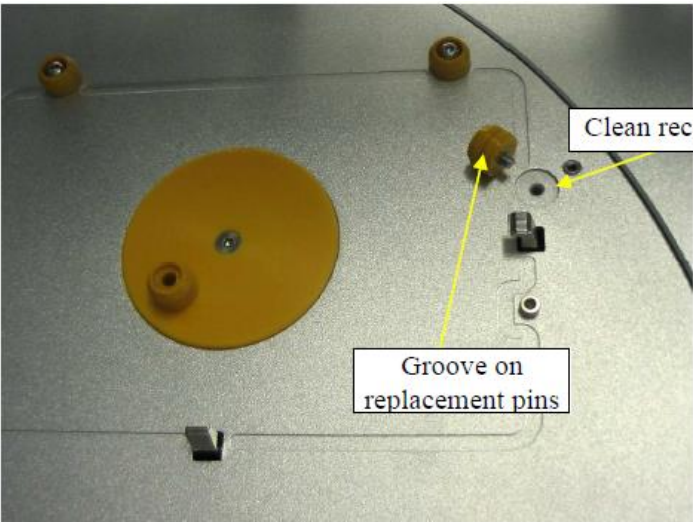
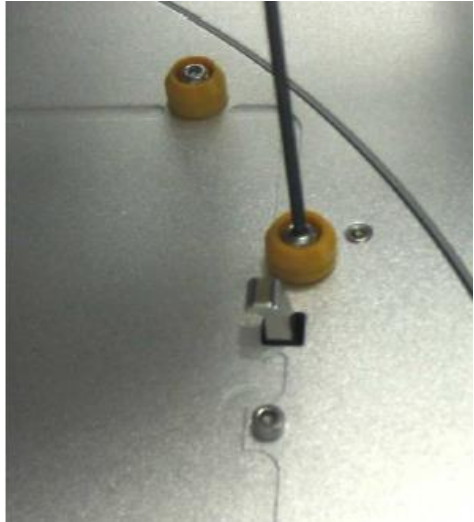


Location of the pins needing replacement



ROTOR - V2 PINS - FITTING

- Remove all the pins needing replacement. The photos below use the yellow bay as an example. The same procedure should be repeated for the other locations.

		
<p>Remove the screw and the pin from its location</p>	<p>It will be tight in the hole. If you have trouble removing the pin use the Allen key down the hole to lever the pin out</p>	<p>Remove the pin and screw</p>
		
<p>Clean the recess ready for the new pin. You will notice that the new pin has a groove around its diameter. It has a chamfer at one end with a recess for the screw. The other end locates into the recess in the turntable.</p>		<p>Fit the new pin in the recess in the turntable and using the screw you removed earlier tighten down. Do not over-tighten. You may find they are a tight fit. Allow the screw to pull it into the recess but make sure it pulls it in squarely.</p>



ROTOR – V2 PINS - FITTING

Don't forget to select the option in the program which tells the software you have fitted new pins.

CONCLUSION

We hope that this explanation will assist you in performing the above procedure. If you need further assistance do not hesitate to contact the Technical Support Team at Singer Instruments.

CONTACT INFORMATION

Name(s): *Ian Morgan*

Phone : *+44 (0) 1984 640226*

Email: *technicalsupport@singerinstruments.com*